



"NOT THE BEES"

A narrative exploration of the socio-cultural relationship between Nicolas Kim Coppola and contemporary bee degradation.

PROPOSAL

We propose a design for a contemporary bee inhabitation that reflects the socio-cultural references and implications of the time. Drawing on historical and current events in the pop-culture realm, we can extrapolate a unique dichotomy between several seemingly unconnected positions. By understanding the fragile and intricate natures of the honey-producing bee, along with socio-historical overlaps, new considerations for controlled inhabitations can be explored.

Overlaying an ongoing pop-cultural narrative with the timeline of the past century's bee extinction scare reveals a new and formally appropriate manifestation of our culture's influence on Anthophilia. Our design rejects the notion that form may follow function; instead form will follow pop-historical flux.



N.Coppola and Anthophilia in the 2006 horror film *Wicker Man*. J.Seinfeld, as Anthophilia in the 2007 computer animated comedy *Bee Movie*. Ellen Page, 22, narrating the 2009 political-ecological documentary *Vanishing of the Bees*. *More Than Honey*, a 2013 documentary surrounding the contemporary struggles of Anthophilia.

Initial overlap of Anthophilia and pop-cultural phenomena; the point of departure for the study of N.Coppola x Honey Bee.

NICOLAS KIM COPPOLA
Homo Sapien

HONEY BEE
Anthophila



1964: Nicolas Kim Coppola is born unto this earth
<http://www.biography.com/people/nicolas-cage-9234498>



1982: Nicolas Coppola's film debut in *Fast Times at Ridgemont High*
<http://www.imdb.com/title/tt0083929/>



1990: Coppola explores impersonations and parody as Elvis in *Wild at Heart*
<http://www.imdb.com/title/tt0100935/>



1997: Exchanges facial-features with John Travolta in *Face/Off*
http://www.imdb.com/title/tt0119094/?ref_=fn_al_pt_1



2006: Nicolas Coppola co-stars along-side rare appearances with the bees in *The Wicker Man*
<http://www.imdb.com/title/tt0450345/>



2007: Proves his ancestor's innocence in the assassination of Abraham Lincoln
http://www.imdb.com/title/tt0465234/?ref_=nm_film_act_2



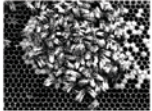
2015: Nicolas Coppola aids in locating kidnapped Ohio girl
<http://www.abc.com/2015/12/04/nicolas-cage-missing-girl-found/>



2016+: Nicolas Coppola and the remaining world bee populations are formally united and intertwined, fulfilling a foretold destiny of thriving bee futures
www.ijprojects.ca/bee-nic-cage-futures



1800: Beekeeping a viable industry in contemporary society
http://www.bbls.org.uk/files/library/allotment_guidance_v2_1306060538.pdf



1970: First documented cases revealing DDT and agricultural pesticides affecting insect population
<http://www.globalresearch.ca/death-of-the-bees-genetically-modified-crops-and-the-decline-of-bee-colonies-in-north-america/23950>



1985-1997: Reported 57% decrease in world bee colony populations
<http://www.businessinsider.com/us-honeybee-population-is-collapsing-2013-3>



1996: 'Mad Bee' disease decimates French bee populations
<http://www.businessinsider.com/us-honeybee-population-is-collapsing-2013-3>



2005: US Bee colonies drop 30%, from 15% in 2004
<http://www.businessinsider.com/us-honeybee-population-is-collapsing-2013-3>



2006: US bee populations drop to lowest point in record
<https://www.washingtonpost.com/news/wnb/wp/2015/07/23/call-off-the-bee-pocalypse-u-s-honeybee-colonies-hit-a-20-year-high/>



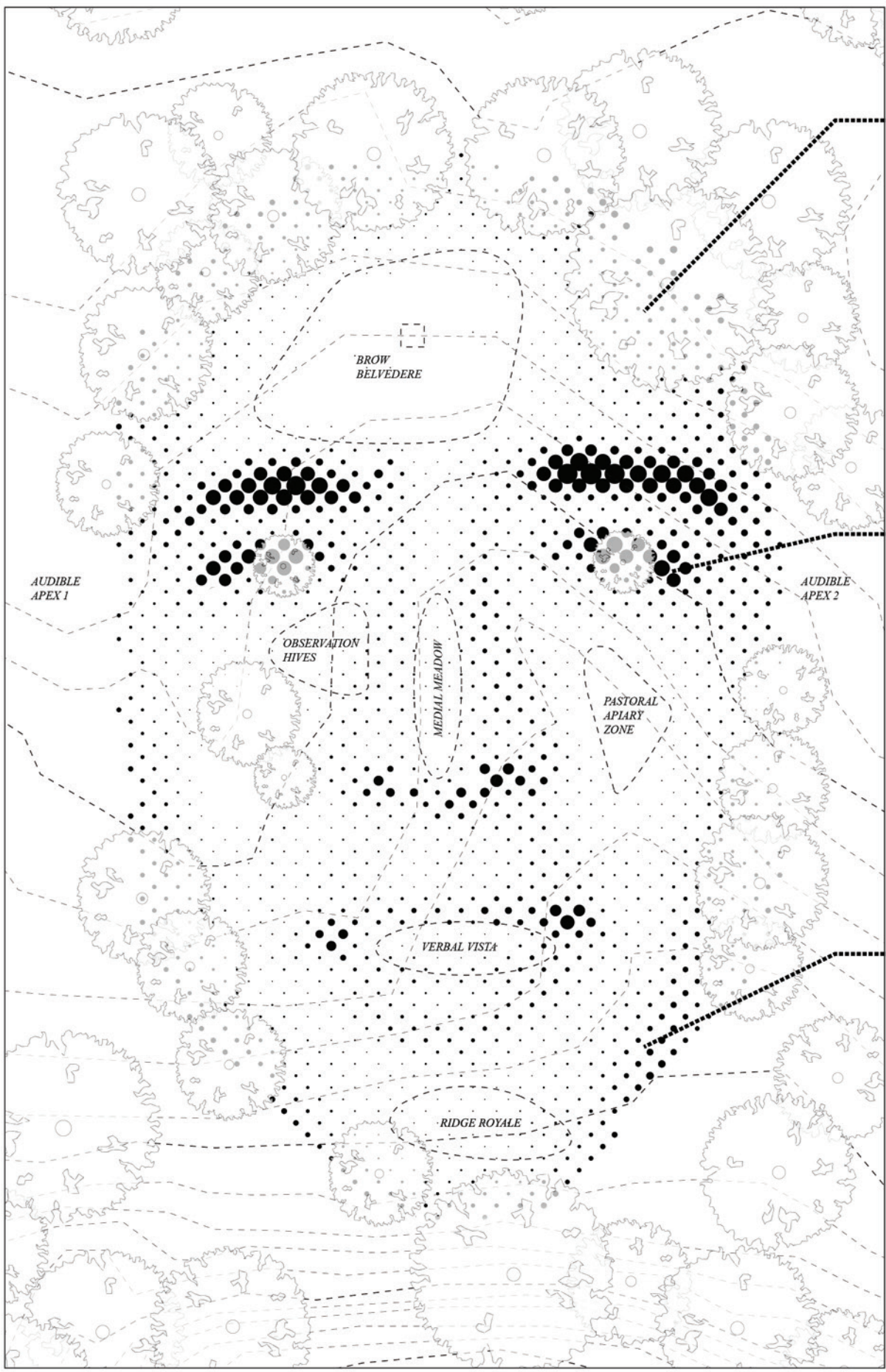
2009: "Save the Bees" campaign begins by Greenpeace
<http://www.treehugger.com/sustainable-agriculture/bee-peril-timeline.html>



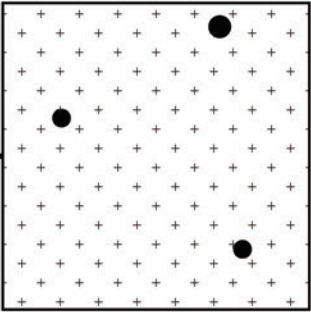
2015: "Call off bee apocalypse" bee colony populations hit 20 year high
<https://www.washingtonpost.com/news/wnb/wp/2015/07/23/call-off-the-bee-pocalypse-u-s-honeybee-colonies-hit-a-20-year-high/>

TIMELINE

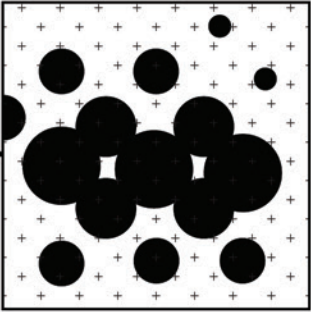
A pop-historical analysis of N.Coppola's career against the recent reproductive tendencies of Anthophilia, displaying a positive correlation.



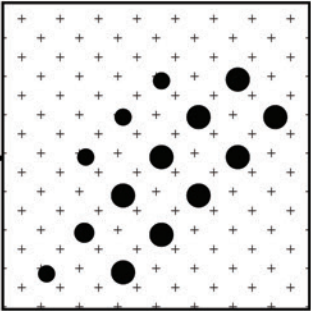
SITE PLAN
University of Manitoba Pointlands, *Bee Utopia*



LIMINAL DENSITIES
Bee habitations are spread at wider proximities
lowering competition between hives



MAXIMAL DENSITIES
Close-proximity hives create abilities for large scale
hive development in cooperative hives communities



MEDIAL DENSITIES
Operations occur with proximal idelologies for
a wide range of species observations

Telescopic vertical member allows for
outer cage removal and maintainance
access onto the surface of the bee house

Adjustable base plate fitting for complete
bee house removal

Ergonomical cage handle for easy
vertical cage movements and extractions

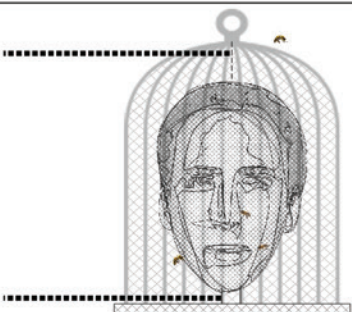
Varying scales of surface penetrations
give maximum habitat opportunities

External cage of varying printed material
thicknesses for shading opportunities

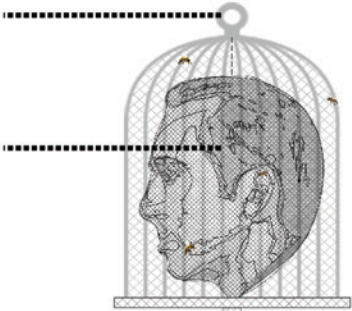
Simple flat 3D printed base plates for
excess material collection and extraction

Undulating surfaces on house surface
offer ample opportunitis for bees to
congrigate and inhabit at their desire

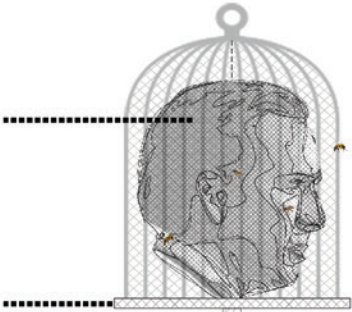
Single 2"x2" wood post received into
form under the 3D printed baseplate



NORTH ELEVATION



EAST ELEVATION



WEST ELEVATION



SOUTH ELEVATION